



## SSL VPN Installation and Configuration Notes

Open below URL in your web browser.


<https://122.182.14.98:8443/>

**Username**                      **Password**

Username                        \*\*\*\*\*

A screenshot of a web browser window showing the Softweb Solutions SSL VPN Portal. The browser's address bar displays "https://122.182.14.98:8443" with a "Not secure" warning. The page content includes the Softweb Solutions logo and the text "Welcome to the Softweb Solutions SSL VPN Portal!". Below this is a login form with three input fields: "Username:" (empty), "Password:" (empty), and "Language:" (set to "English" with a dropdown arrow). A "Login" button is positioned at the bottom of the form.

← → ↻ ⚠ Not secure | https://122.182.14.98:8443 ☆ 🔍 🔗 🗺️ | K !

  
An Avnet Company

**Welcome to the Softweb Solutions SSL VPN Portal!**

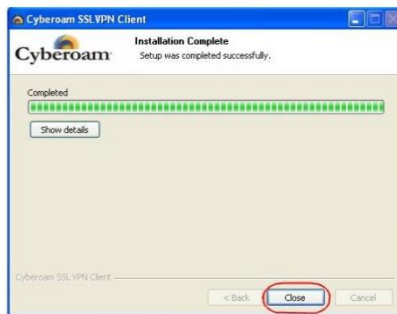
Username:

Password:

Language:  ▼

**Step 1 Download Client**

Click Download SSL VPN Client and follow the on-screen instructions:



Once the installation is complete, you will find CrSSL Client icon in the system tray.

## Download SSL VPN Client Configuration

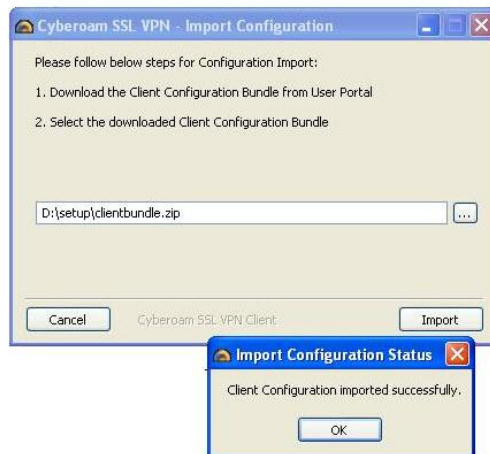
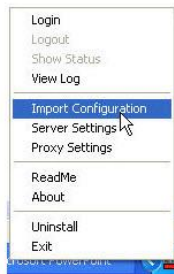
If you are installing SSL VPN client for the first time, skip this section.

**Step 1** You need to download the configuration file if you have already installed Client or if the server configuration has changed. Click Download SSL VPN Client Configuration and follow the on-screen instructions to save the file:




## Step 2 Import SSL VPN configuration



Right click the Client icon and import the configuration.



### Step 3 Login to access network resources or Internet

Double click SSL VPN Client icon  and specify username and password and click Connect button



The icon turns yellow  indicating that connection is in progress and turns green  the moment connection is established and IP is leased.



After connect VPN.

Connect RDP with your local IP and username/password.